



ORLANDO HERNANDEZ
Victory Yacht Sales
1950 Northeast 135th Street
North Miami, FL, US
Office: 305.219.4323
Mobile: 305-219-4323
Orlando@victoryyachts.com



2007 Azimut 55E

Boat Type: Motor Yacht

Address: Miami Beach, FL, US

Price: \$599,000



OVERVIEW

Sea Raven is a two owner vessel delivered new in January 2008 and the NEW Owner has made an extensive investment in replacing all the cushions and sun pads all the carpeting and all brand NEW wall coverings ordered from Azimut. This yacht has only 793 hours on the C-12 Cat's and 955 on the Generator...

Victory Yacht Sales is the Exclusive Distributor of Johnson Yachts For Non-USA Caribbean, Central and South America.

We Offer Yacht Financing For NON-U.S Residents Living Abroad.

Ofrecemos Financiamiento a No Residente de USA Que Vivan y Quieran Llevar su Yates Para Uso En Su Pais.

For any questions please call me Orlando Hernandez at 305.219.4323 or email

at Orlando@VictoryYachts.com

Hablamos Español

SPECIFICATIONS

Basic Information

Manufacturer:	Azimut	Vessel Name:	
Model:	55E	Boat Type:	Motor Yacht
Year:	2007	Hull Material:	Fiberglass
Category:	Power	Hull Type:	Modified Vee
Condition:	Used	Hull Color:	White
Location:	Miami Beach, FL, US	Designer:	
Available for sale in U.S. waters:	Yes	Flag of Registry:	US

Dimensions & Weight

Length:	55 ft - 16.76 meter	Draft - max:	4 ft - 1.22 meter
LOA:	57 ft 4 in - 17.47 meter	Bridge Clearance:	-
Beam:	15 ft 7 in - 4.75 meter	Dry Weight:	52000 ft - 15849.6 meter

Engine

Make:	Caterpillar	Engine Type:	Inboard
Model:	C-12	Drive Type:	Direct Drive
Engine(s):	2	Fuel Type:	Diesel
Hours:	764	Horsepower:	710 (Individual), 1420 (combined)
Cruise Speed:	33 MPH	Max Speed:	37 MPH
Range:	-	Joystick Control:	No

Tank Capacities

Fuel Tank:	655 gallons - 2 tank(s)	Holding Tank:	-
Fresh Water Tank:	169 gallons - 1 tank(s)		

Accommodations

Total Cabins:	3	Crew Cabins:	1
Total Berths:	-	Crew Berths:	-
Total Sleeps:	8	Crew Sleeps:	-
Total Heads:	2	Crew Heads:	-
Captains Cabin:	1		

DESCRIPTIONS

Boat Name: Sea Raven

Dimensions

LOA: 55 ft 0 in

Beam: 15 ft 7 in

Maximum Draft: 4 ft 0 in

Displacement: 42000 lbs

Engines

Engine 1:

Engine Brand: CAT

Year Built: 2007

Engine Model: C12

Engine Type: Inboard

Engine/Fuel Type: Diesel

Engine Hours: 764

Engine Power: 710 HP

Engine 2:

Engine Brand: CAT

Year Built: 2007

Engine Model: C12

Engine Type: Inboard

Engine/Fuel Type: Diesel

Engine Hours: 793

Engine Power: 710 HP

Tanks

Fresh Water Tanks: (169 Gallons)

Fuel Tanks: (655 Gallons)

Accommodations

Number of single berths: 2

Number of double berths: 2

Number of cabins: 3

Number of heads: 2

Electronics

Log-speedometer

Navigation center

Autopilot

Compass

GPS

Radar

VHF

TV set

Cockpit speakers

Plotter

Repeater(s)

Depthsounder

Radio

Inside Equipment

Refrigerator

Air conditioning

Bow thruster

Electric bilge pump

Oven

Battery charger

Microwave oven

Hot water

Washing machine

Dishwasher

Stern thruster

Electrical Equipment

Shore power inlet

Inverter

Generator

Outside Equipment/Extras

Cockpit cushions

Swimming ladder

Teak cockpit

Cockpit shower

Covers

Bimini Top

Accommodations

Boarding the yacht can be accomplished via the swim platform or the port and starboard side boarding gates. The swim platform has a built-in retractable swim ladder. The platform is covered in teak as well as the cockpit sole. The cockpit has a built-in transom bench with a hatch leading into a cavernous lazarette for storage, hot cold transom shower and numerous storage cabinets.

The lazarette can be converted into a single crew cabin. Immediately forward of the transom bench is the equipment and engine room hatch. There are steps both port and starboard leading to the side decks and foredeck area. The foredeck has a large sun pad.

Returning to the cockpit there are steps leading up to the flybridge. The flying bridge has an upper helm station with complete controls and navigation electronics, double wide helm seat, electric grill, refrigerator, semi-circle bench seating, adjustable table, bimini top and aft sun pads.

Entering the interior of the yacht is from the cockpit area through a stainless steel framed tempered glass sliding door. Stepping inside you immediately enter the salon area with built in C-shaped Italian leather sofa to starboard. There is a high gloss cherry & burl wood coffee table built into the forward section of the sofa. To starboard is a high gloss cherry & burl wood cabinet. The salon TV is located in this cabinet on an electrical lift as well as the AV components for the salon. An icemaker is located in the cabinet and a bottle storage area.

Moving forward and up two steps is the dining area to starboard and galley to port. The dining settee is covered in the same beautiful Italian leather as the sofa. There is a large high gloss cherry & burl wood dining table with removable center leaf. Between the dining table and full galley is a bar area with storage for all the dishware, glassware and flatware. The galley is fully equipped to prepare meals with an abundance of storage areas.

Forward of the galley/dining area is the centerline lower helm with full instrumentation and navigation electronics. The leather covered helm seat is electrically adjustable fore and aft, up and down.

To port of the lower helm is the staircase leading down to the accommodation area. At the base of the stairs is a cabinet with the combo washer/dryer. There are three staterooms; a full beam mid ship Master, forward VIP and a starboard guest.

The Master has an offset queen sized island berth, ensuite head compartment with shower and numerous storage lockers, drawers and cabinets.

The VIP has a centerline queen sized island berth, ensuite head compartment with shower, and numerous storage lockers, drawers and cabinets.

The Guest Stateroom has twin berths, storage locker and drawer storage. The Guest Stateroom has a separate entrance to the VIP head compartment.

Audio & Visual Equipment

Entertainment System:

a. Video Equipment

TV's: 32" Samsung-LED (Main Salon)

22" Samsung LED (Master Stateroom)

19" Samsung LED (VIP Stateroom)

b. Audio Equipment

Stereo's: Sony CD/MP3 (Main Salon)

JVC CD/MP3 (Master Stateroom)

JVC CD/MP3 (VIP Stateroom)

Sony CD/MP3 (Flybridge)

c. Other

SAT-TV with 2 receivers (Main Salon & Master Stateroom)

Galley

Cooking Equipment: Range Ceran 3 Burner

Grill: 1 (Cockpit)

Microwave: General Electric

NEW: Refrigerator, Icemaker (Main Salon)

Laundry Room

Main Laundry Equipment: Splendide Comb O-Matic 5200

Electronics & Navigational Equipment

Communications Systems:

VHF: (2) Simrad RS81

Navigation Systems:

Radar: (2) Simrad DS44; 72 nautical miles

Autopilot: (2) Simrad AP16

Depth Sounder: (2) Simrad IS 12

GPS: (2) Simrad DS 44

Deck Equipment

Anchor Windlass System: Lofrans 1200

Anchor: (1) 32kg Plow

Anchor Chain: 75 meters

All NEW Cushions

Engine / Mechanical Equipment

Main Engines:

Engine Type: (2) Caterpillar C12 @ 715 HP each

Drive: Propellers

Generators & Electricity:

Generators: (1) 20 Kw Kohler generator

Shore Power: 220/140

Batteries: Main Engine Starting: (2) 200 AH; Dolphin 24V 80 A

Generator Starting: (1) 100 AH; Dolphin

Air Conditioning:

Type: Cruise Air System: 67,000 BTU

Other Machinery:

Bow Thruster: Side Power, 10HP

Stern Thruster: Side Power, 10HP

Sewage System: Vacuflush

Electrical Equipment

(1) 20 Kw Kohler generator

Shore Power: 220/140

Batteries: Main Engine Starting: (2) 200 AH; Dolphin 24V 80 A

Generator Starting: (1) 100 AH; Dolphin

Safety & Fire Protection

Fixed Halon System: (1) FM-200 (Engine Room)

Fire Extinguishers: (3) Kiddie (Main Salon, Master Stateroom, Flybridge)

Exclusions

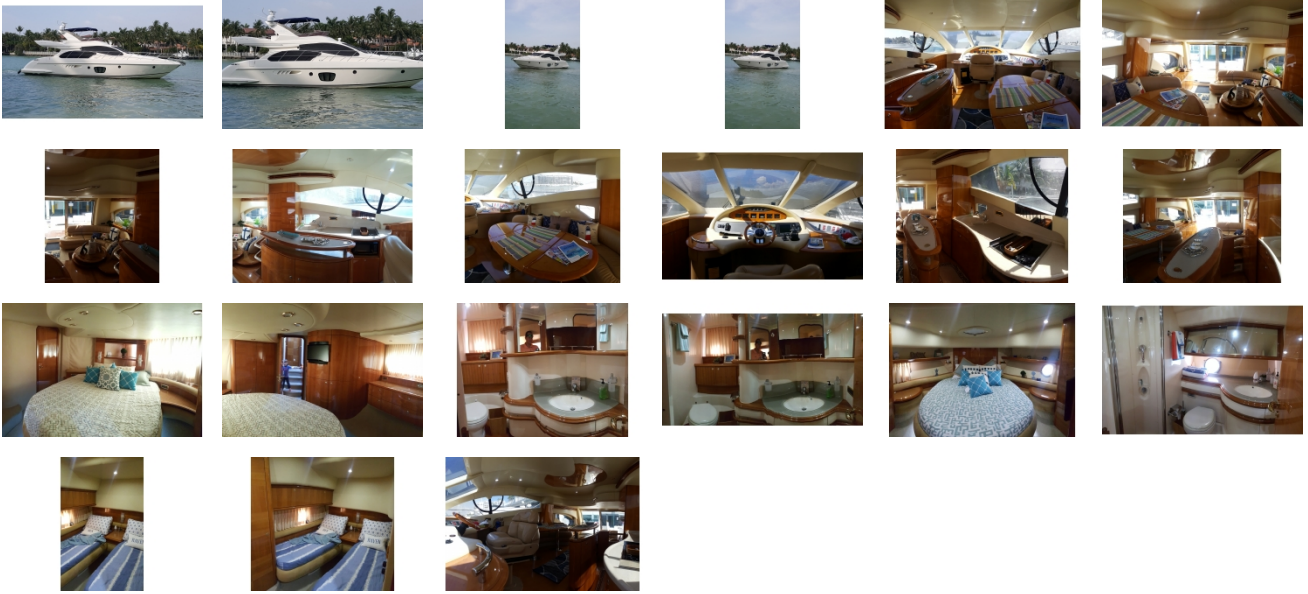
-Exclusions include all of the owners's personal effects-

"All speeds, capacities, consumption, etc. are approximate or estimated; measurements can also be approximate. Specifications are provided for information only and particulars herein obtained from sources to be believed to be correct, but are not guaranteed. Buyer should instruct his agent and/or surveyor to check all details for accuracy. Offered subject to prior sale, price and/or inventor change, or withdrawal from the market without notification."

Disclaimer

The Company offers the details of this vessel in good faith but cannot guarantee or warrant the accuracy of this information nor warrant the condition of the vessel. A buyer should instruct his agents, or his surveyors, to investigate such details as the buyer desires validated. This vessel is offered subject to prior sale, price change, or withdrawal without notice.

GALLERY



LOCATION MAP



ORLANDO HERNANDEZ
Victory Yacht Sales
1950 Northeast 135th Street
North Miami, FL, US
Office: 305.219.4323
Mobile: 305-219-4323
Orlando@victoryyachts.com

